

Irrigation Control Enclosure

NEMA 3R Vandal Resistant Enclosure

Application

- ◆ Intended for outdoor use
- ◆ Provides protection against contact with enclosed irrigation controller

Construction

- ◆ 14 gauge (.075 thick) stainless steel or
- ◆ .125 thick 5052 marine grade aluminum or
- ◆ 12 gauge (.105 thick) cold rolled steel
- ◆ Knock down construction for quick on-site assembly
- ◆ Can quickly be removed if needed
- ◆ Convection air flow
- ◆ Slip-on removable (inspection) door
- ◆ Accepts padlock or shackleless through bolt lock
- ◆ Pad lock cover provided
- ◆ No gasket required
- ◆ Aluminum back panel provided
- ◆ Print pocket provided (9" x 9")
- ◆ Construction and appearance similar to Air Valve Enclosure and Back Flow Enclosures
- ◆ Corrosion resistant hardware provided

Finish

- ◆ Stainless Steel units with matte orbital finish
- ◆ Aluminum units with matte orbital finish
- ◆ Steel units powder coated light green or tan
- ◆ Stainless steel and aluminum enclosures can be powder coated (optional)

Customs

- ◆ Enclosures may be customized to your exact specification and size
- ◆ Made in Brea, California



| | | | |
|--------------|------------------------|----------------------|--------------------------|
| 35 x 12 x 12 | MCF-ICE-351212-ALUM | MCF-ICE-351212-SS | MCF-ICE-351212-G or T |
| 35 x 18 x 12 | MCF-ICE-351812-ALUM | MCF-ICE-351812-SS | MCF-ICE-351812-G or T |
| 35 x 24 x 12 | MCF-ICE-352412-ALUM | MCF-ICE-352412-SS | MCF-ICE-352412-G or T |
| 35 x 24 x 24 | MCF-ICE-352424-ALUM-2D | MCF-ICE-352424-SS-2D | MCF-ICE-352424-2D-G or T |



METAL CABINET AND FIXTURE COMPANY

a **Span-O-Matic, Inc.** Company

825 COLUMBIA STREET, BREA, CA 92821

PHONE: 714-256-4700 FAX: 714-256-4401

WWW.SPANOMATIC.COM

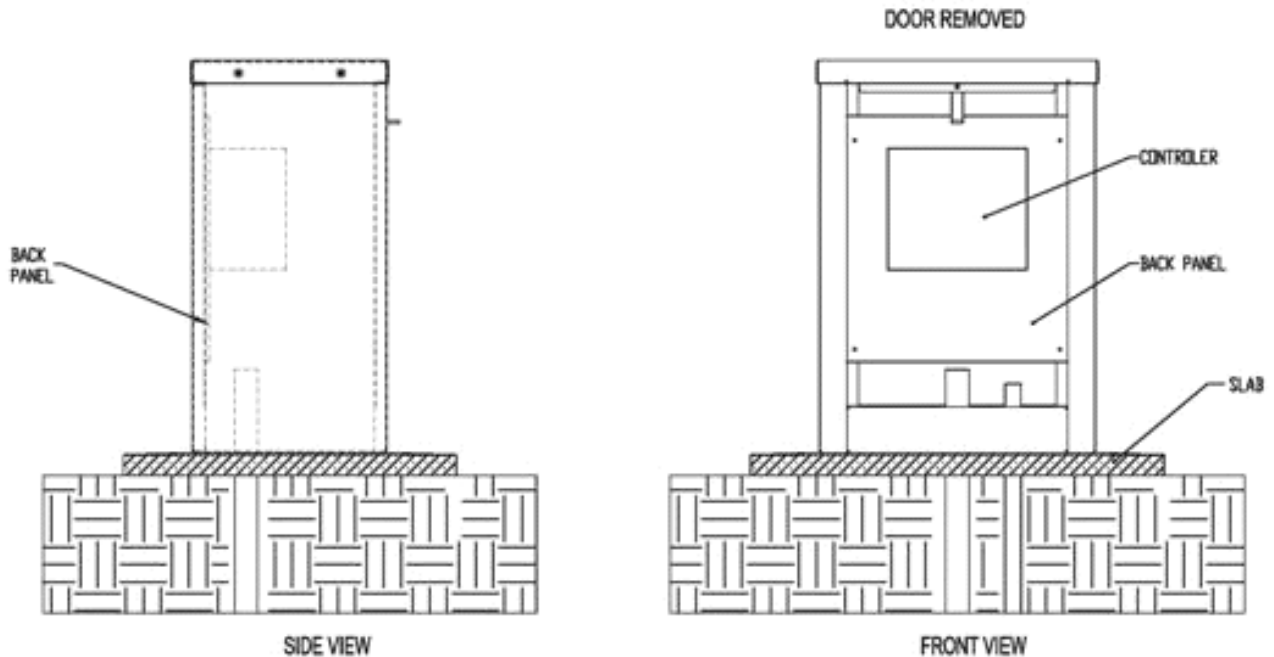
WWW.METALCAB.COM

MCF-ICE

Irrigation Control Enclosure

NEMA 3R Vandal Resistant Enclosure

IRRIGATION CONTROL ENCLOSURE



Specification:

The Irrigation Control Enclosure shall be vandal and weather resistant. The enclosure shall be easily assembled, disassembled and knockdown. The enclosure anchors to the concrete pad with corrosion resistant 1/2" x 13 wedge stud anchors. The enclosure shall utilize convection for ventilation. The enclosure has a drip shield top and can be insulated. The slip-in, drop-in and removable door is secured to the enclosure with a pad lock protected with a cover or with shackleless through bolt lock. No gasketing required. The enclosure shall be NEMA Type 3R.

A removable aluminum back panel is provided to mount electrical, electronic and other types of equipment. The back panel bolts opposite the front entry. A 9" x 9" print pocket is provided.

Stainless steel enclosures are made from 14 gauge (.075") thick Type 304 Stainless
Aluminum enclosures are made from .125" thick 5052-H-32 Marine Grade Aluminum
Steel enclosures are made from 12 gauge (.105") thick Cold Rolled Steel



METAL CABINET AND FIXTURE COMPANY

a **Span-O-Matic, Inc.** Company

825 COLUMBIA STREET, BREA, CA 92821

PHONE: 714-256-4700 FAX: 714-256-4401

WWW.SPANOMATIC.COM

WWW.METALCAB.COM

MCF-ICE